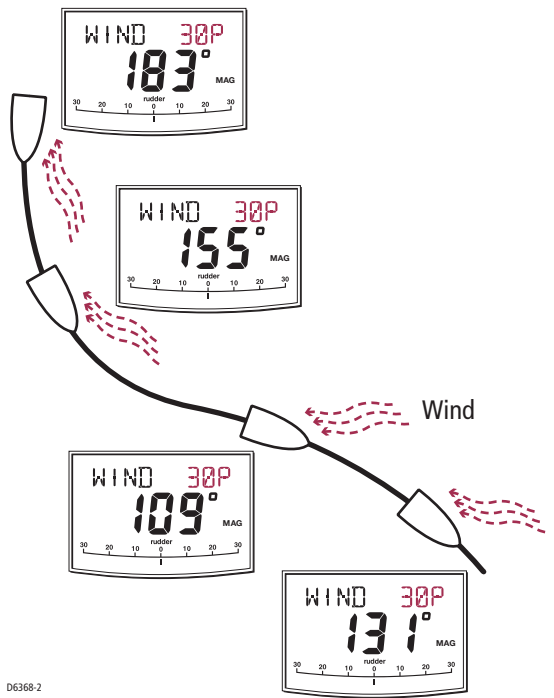
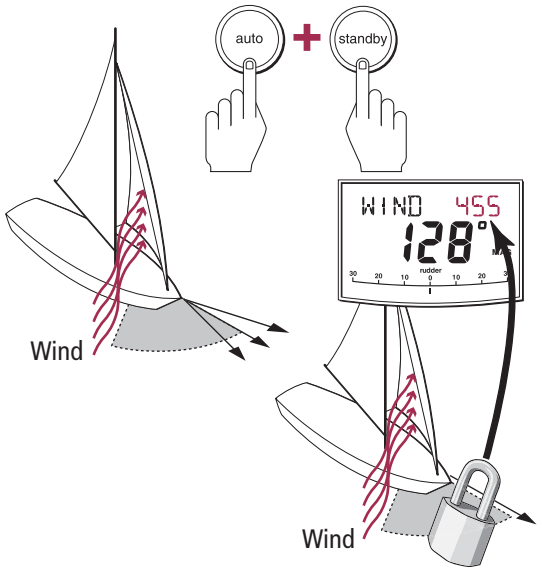
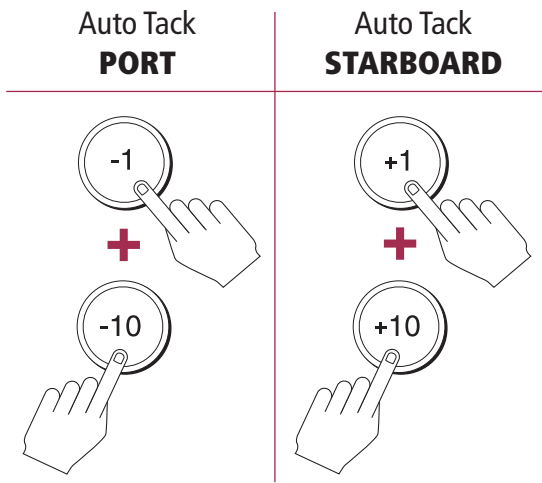
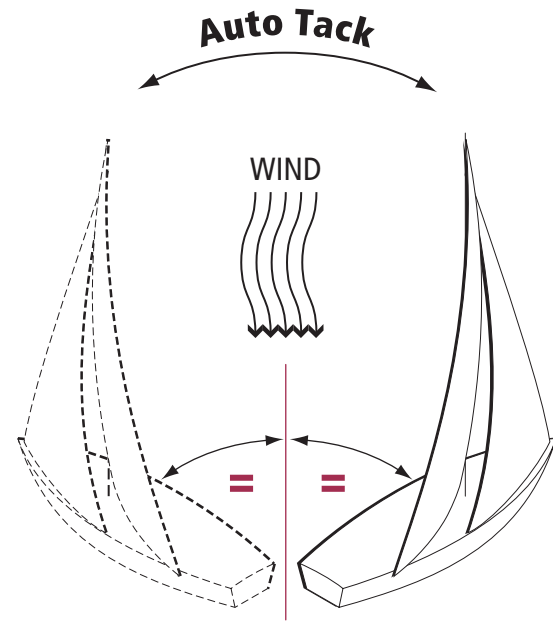


To Automatically Steer to a Fixed Wind Angle



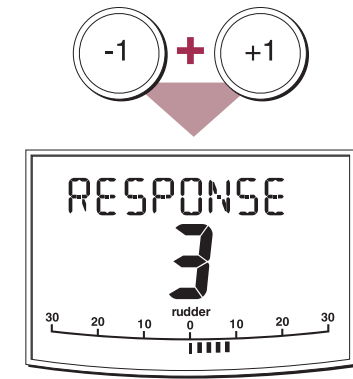
Autotack



N.B. Refer to section 1.5 of the ST6002 Operating Guide for full details

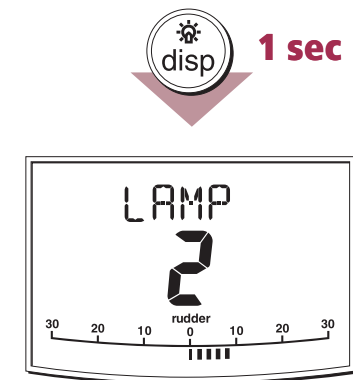
To Adjust Autopilot Course-keeping Accuracy

Autopilot response controls course keeping accuracy. Higher response settings keep a tighter course but increase the amount of drive activity and battery use. Set to a level appropriate for your needs



Use **-1** or **+1** to adjust response level. Press **disp** to return to previous mode.

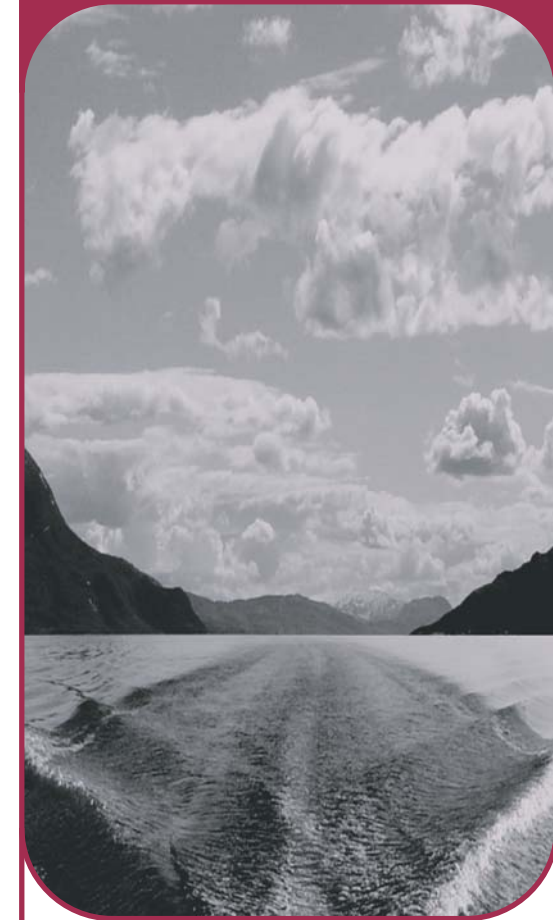
To Adjust Lighting Level



Use **disp** to adjust lighting level. Wait 10 sec to return to previous mode.



SmartPilot® ST6002 Controller



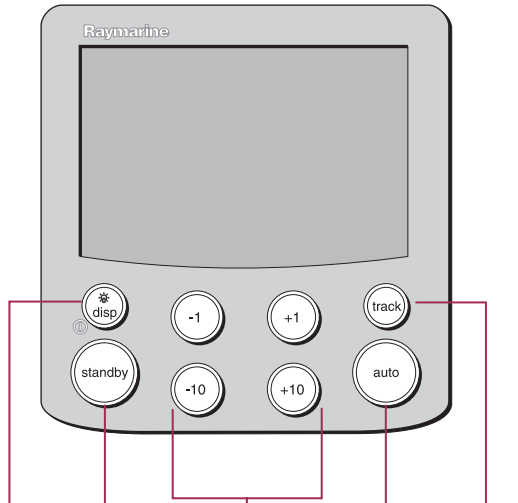
Quick Start Guide

Display Layout

To activate the Autopilot

To change the Autopilot Heading

To follow a Route set on a Chartplotter



standby
Press for Manual Control

auto
Press to activate the Autopilot

course change keys

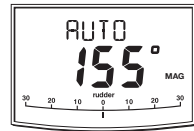
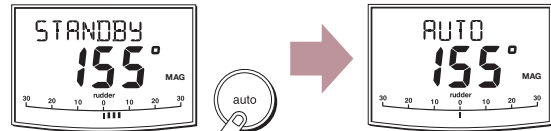
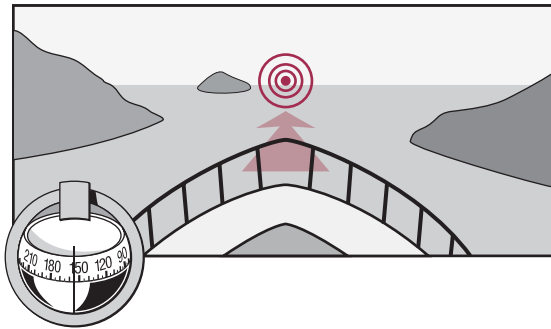
Port 1° Starboard 1°
Port 10° Starboard 10°



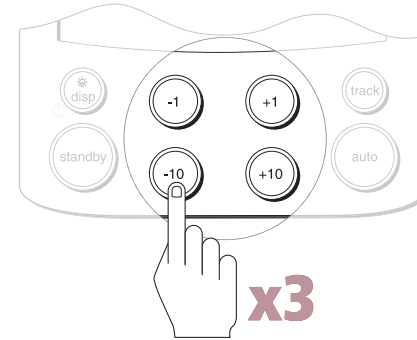
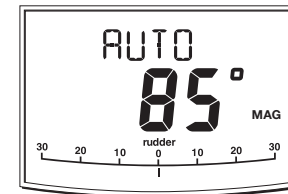
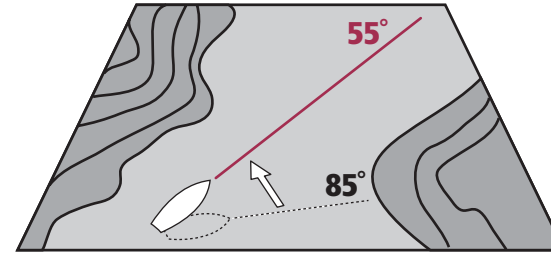
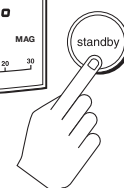
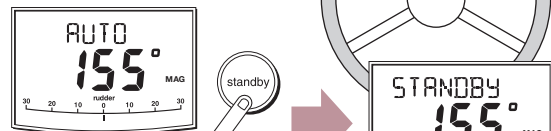
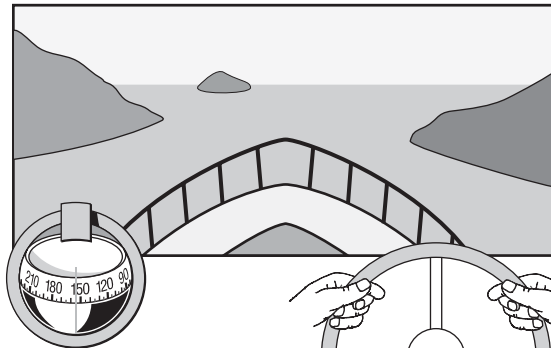
disp
Press to display data pages
Press for 1 second for lamp control
Press for 3 seconds for power off

track

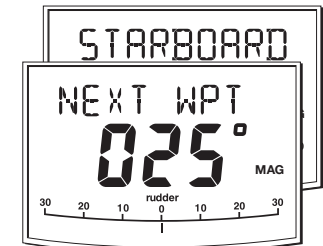
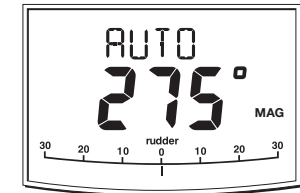
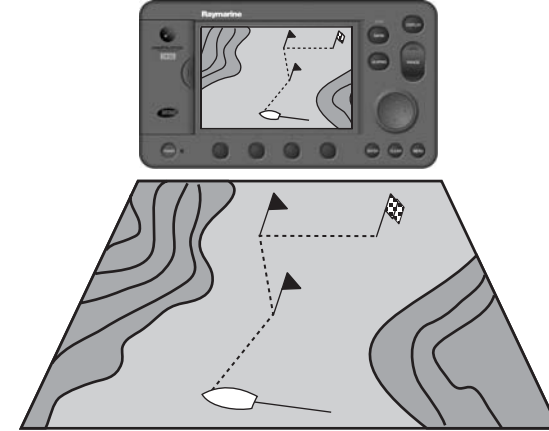
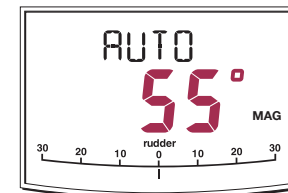
When the Autopilot is activated, press to follow a route from a connected navigation system.
Press again to accept the new course



For Manual Control



x3



OK?

